

MEDIAN - SOFT CURVED EDGE

240V LED DIMMER MODULE, PLATES & KNOBS



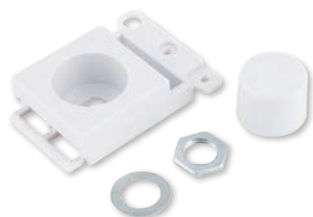
Standard of Compliance - **BS EN 60669-2**
 Mounting Boxes - **35mm deep min** Type - **Leading Edge**

Certified - **intertek**

List No.	Description	Pack Qty
LEDDIM120	2 Way 0-120W LED Dimmer	1
NDP1	1 gang dimmer plate & knob	1
NDP2	2 gang dimmer plate & knobs	1
NDP3	3 gang dimmer plate & knobs	1
NDP4	4 gang dimmer plate & knobs	1

Suitable for mains & low voltage lighting. When using with LED lighting check with the manufacturer for compatibility prior to installation.

DIMMER MODULE MOUNTING KIT

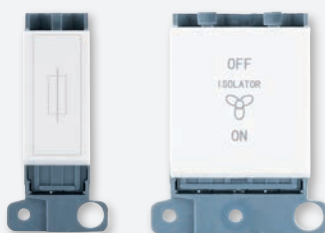


Install
Remove two switches out of a Median 10AX light switch and replace with this adaptor. This then allows you to mount the LEDDIM120 at the side of a standard switch without using Matrx20 grid.

Certified - **intertek**

List No.	Description	Pack Qty
NMDA1	Dimmer module mounting kit	1

MODULES



Standard of Compliance - **BS EN 60669-1**
 Mounting Boxes - **16mm**

Certified - **intertek**

List No.	Description	Pack Qty
NSPMFUSE	Single width fuse module	1
NSPMFAN	Twin width fan isolator module.	1

MODULE FRONT PLATES



Standard of Compliance - **BS 1363-2 & BS EN 62368**
 Mounting Boxes - **25mm deep**

Certified - **intertek**

List No.	Description	Pack Qty
NSP1	1 gang front plate	10
NSP2	2 gang front plate	10
NSP3	3 gang front plate	10
NSP4	4 gang front plate	10
NSP6	6 gang front plate	10

13A SOCKET OUTLETS - 1 GANG



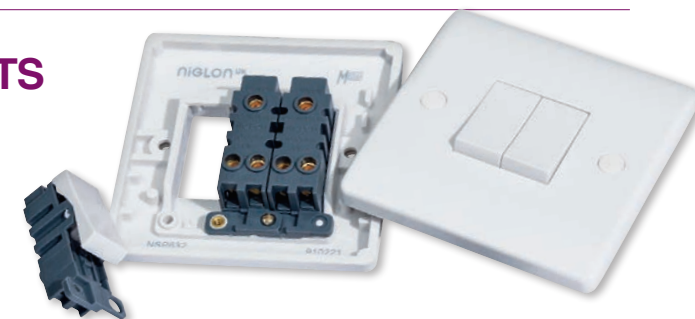
Standard of Compliance - **BS 1363-2**
 Mounting Boxes - **25mm deep**

Certified - **intertek**

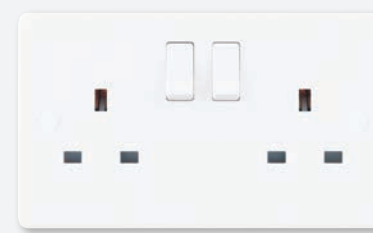
List No.	Description	Pack Qty
NS131	1 gang unswitched socket	10
NS131S	1 gang single pole switched socket	10
NS131DPS	1 gang double pole switched socket	10

FEATURES & BENEFITS

- Soft Curved Edge
- **Single Screw Modular Switches**
- Antimicrobial Urea Switchplate*
- **Single Screw Fixing**
- Plate depth 9.5mm
- **Matrix20 Compatible**



13A SOCKET OUTLETS - 2 GANG



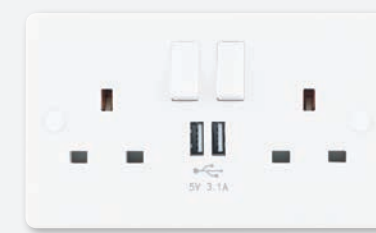
Standard of Compliance - **BS 1363-2**
 Mounting Boxes - **25mm deep**

Certified - **intertek**

List No.	Description	Pack Qty
NS132	2 gang unswitched socket	10
NS132S	2 gang single pole switched socket	10
NS132DPS	2 gang double pole switched socket	10

Note - All 2 gang socket outlets have 2 earth terminals as standard

13A SOCKET OUTLETS - 2 GANG SWITCHED



Standard of Compliance - **BS 1363-2 & BS EN 62368**
 Mounting Boxes - **25mm deep**

Certified - **intertek**

List No.	Description	Pack Qty
NS132USB-3	2 gang with 1 x 2.1A & 1 x 1A USB ports	1
NS132USB-3C	2 gang with 1 x USB-A type & 1x USB-C Type ports	1

Note - All 2 gang socket outlets have 2 earth terminals as standard